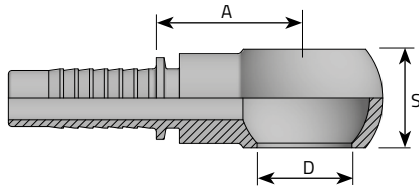


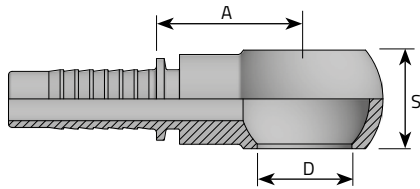
METRIC BANJO (1)



OCCHIO METRICO
 BANJO VIS MÉTRIQUE
 RINGNIPPEL FÜR HOHLSCHRAUBE METRISCH/RNM
 BANJO MÉTRICO

Code	Tube			Thread	Dimensions			Pressure	
	D.N.	Hose	Diam		D	S	A	Bar	Psi
		Inch	mm	mm	mm	mm	mm		
OM0310	-3	3/16"	4.8	M10 x 1	10.1	10	19.5		
OM0312	-3	3/16"	4.8	M12 x 1.5	12.1	12	21		
OM0314	-3	3/16"	4.8	M14 x 1.5	14.1	14	23		
OM0410	-4	1/4"	6.4	M10 x 1	10.1	10	24		
OM0412	-4	1/4"	6.4	M12 x 1.5	12.1	11	23		
OM0414	-4	1/4"	6.4	M14 x 1.5	14.1	14	23		
OM0416	-4	1/4"	6.4	M16 x 1.5	16.1	17	25		
OM0418	-4	1/4"	6.4	M18 x 1.5	18.1	20	29		
OM0512	-5	5/16"	7.9	M12 x 1.5	12.1	12	23		
OM0514	-5	5/16"	7.9	M14 x 1.5	14.1	14	24.5		
OM0516	-5	5/16"	7.9	M16 x 1.5	16.1	17	27		
OM0518	-5	5/16"	7.9	M18 x 1.5	18.1	20	29		
OM0520	-5	5/16"	7.9	M20 x 1.5	20.1	22	28		
OM0522	-5	5/16"	7.9	M22 x 1.5	22.1	22	28		
OM0614	-6	3/8"	9.5	M14 x 1.5	14.1	14	27		
OM0616	-6	3/8"	9.5	M16 x 1.5	16.1	17	27		

METRIC BANJO (2) stecken



OCCHIO METRICO
BANJO VIS MÉTRIQUE
RINGNIPPEL FÜR HOHLSCHRAUBE METRISCH/RNM
BANJO MÉTRICO

Code	Tube			Thread	Dimensions			Pressure	
	D.N.	Hose Inch	Diam mm		D mm	S mm	A mm	Bar	Psi
OM0618	-6	3/8"	9.5	M18 x 1.5	18.1	20	28		
OM0620	-6	3/8"	9.5	M20 x 1.5	20.1	22	28.5		
OM0622	-6	3/8"	9.5	M22 x 1.5	22.1	22	28.5		
OM0818	-8	1/2"	12.8	M18 x 1.5	18.1	20	30		
OM0820	-8	1/2"	12.8	M20 x 1.5	20.1	22	34		
OM0822	-8	1/2"	12.8	M22 x 1.5	22.1	22	34		
OM0826	-8	1/2"	12.8	M26 x 1.5	26.5	30	34.5		
OM1022	-10	5/8"	16	M22 x 1.5	22.1	22	34		
OM1026	-10	5/8"	16	M26 x 1.5	26.5	30	34.5		
OM1226	-12	3/4"	19	M26 x 1.5	26.5	30	35		
OM1230	-12	3/4"	19	M30 x 1.5	30.1	36	41.5		
OM1630	-16	1"	25.4	M30 x 1.5	30.1	36	41.5		