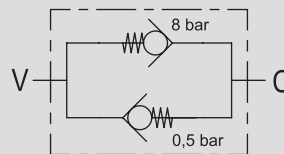
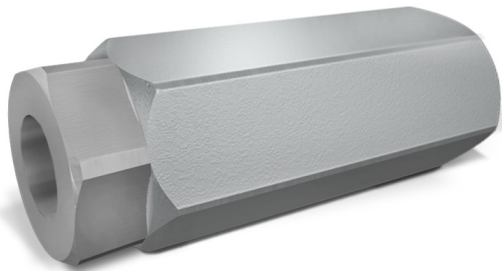


VALVOLE BIDIREZIONALI

TIPO / TYPE

VRC

SCHEMA IDRAULICO
HYDRAULIC DIAGRAM



BIDIRECTIONAL CHECK VALVES

IMPIEGO:

Valvole che consentono il controllo del flusso libero in entrambe le direzioni a diverse tarature.

USE AND OPERATION:

In the bidirectional check valves flow is controlled in both directions at different pressure setting.

MATERIALI E CARATTERISTICHE:

Corpo: acciaio zincato
Componenti interni: acciaio temprato termicamente e rettificato

MATERIALS AND FEATURES:

Body: zinc plated steel
Internal parts: hardened and ground steel

MONTAGGIO:

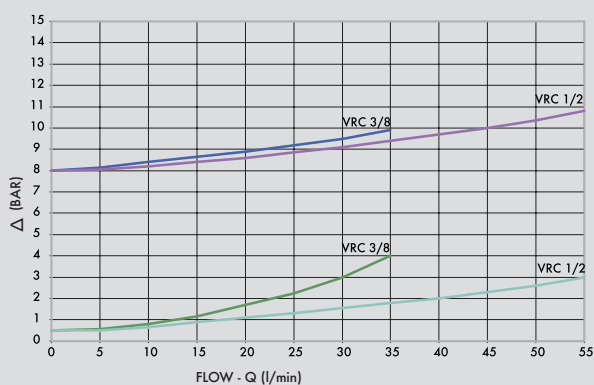
Collegare C o V all'alimentazione a seconda del tipo di regolazione del flusso che si vuole ottenere.

APPLICATIONS:

Connect V or C to the pressure flow according to the adjustment to be obtain.

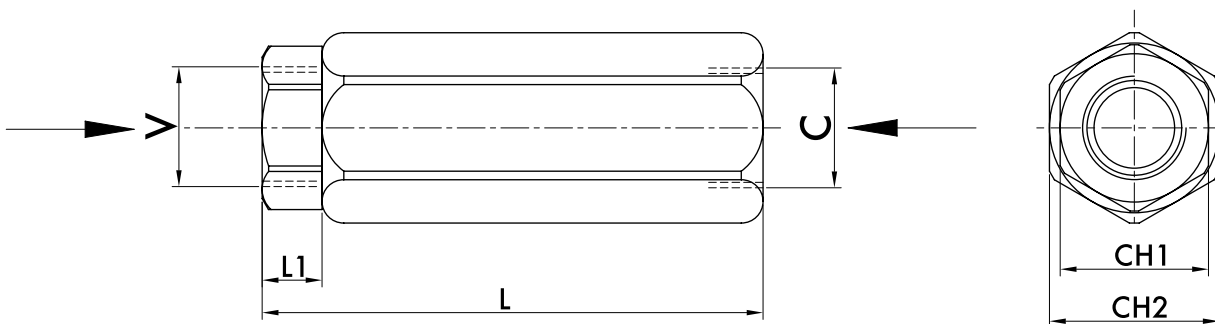
PERDITE DI CARICO PRESSURE DROPS CURVE

Temperatura olio: 50°C - Viscosità olio: 30 cSt
Oil temperature: 50° C - Oil viscosity: 30 cSt





CODICE CODE	SIGLA TYPE	PORTATA MAX MAX FLOW Lt. / min	PRESSIONE MAX MAX PRESSURE Bar	PRESS. APERTURA CRACKING PRESSURE V - C Bar	PRESS. APERTURA CRACKING PRESSURE C - V Bar
V0606	VRC 3/8"	35	350	0,5	8
V0616	VRC 1/2"	55	350	0,5	8



CODICE CODE	SIGLA TYPE	V - C GAS	L mm	L1 mm	CH1 mm	CH2 mm	PESO WEIGHT kg
V0606	VRC 3/8"	G3/8"	100	11	27	30	0,448
V0616	VRC 1/2"	G1/2"	118	26	27	30	0,448